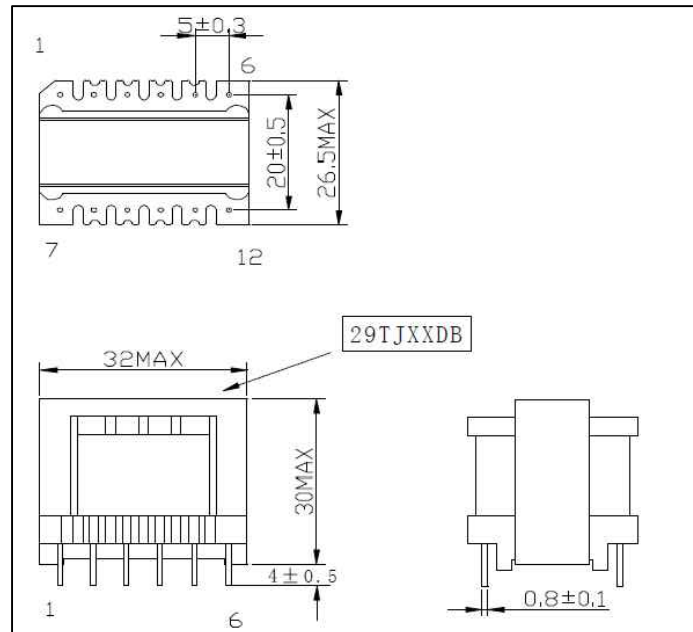
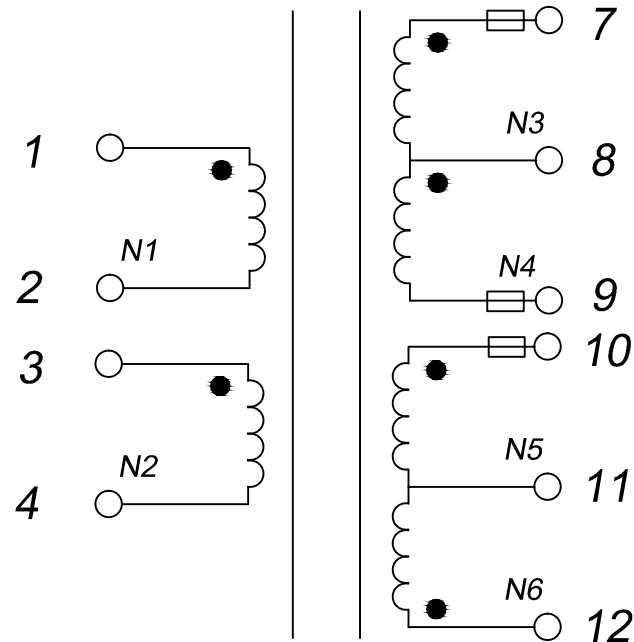


CUSTOMER TERMINAL	ROHS	Lead (Pb) -free
	YES	YES

1. Mechanical Dimensions



2. Schematic Diagram



Note: N3, N4 are in the same layer, N5, N6 are in the same layer
All the windings need to use 2.0mm margin tape at both sides

3. Material List

Core: FW40-EI30
 Bobbin: FWB3005
 Wire: 2UEW-0.32mm 130°C
 Tape: CT-280 WF-2902
 Operating Temperature: -30 to 115°C

4. Electrical Specification

Inductance: L(1-2) = 2.3mH±20% 1.0KHZ 1.0V
 HI-POT: COIL-CORE AC 500V 1mA 10seconds
 P-S AC 3000V 1mA 10seconds

REV.	DATE	 Convention Placement	DRW.	Drawing Title: TRANSFORMER	Part No:
0	00/00		CHK.		Customer P/N:
RoHS		www.ferriwo.com	APP.		Specification Sheet 1 of 1