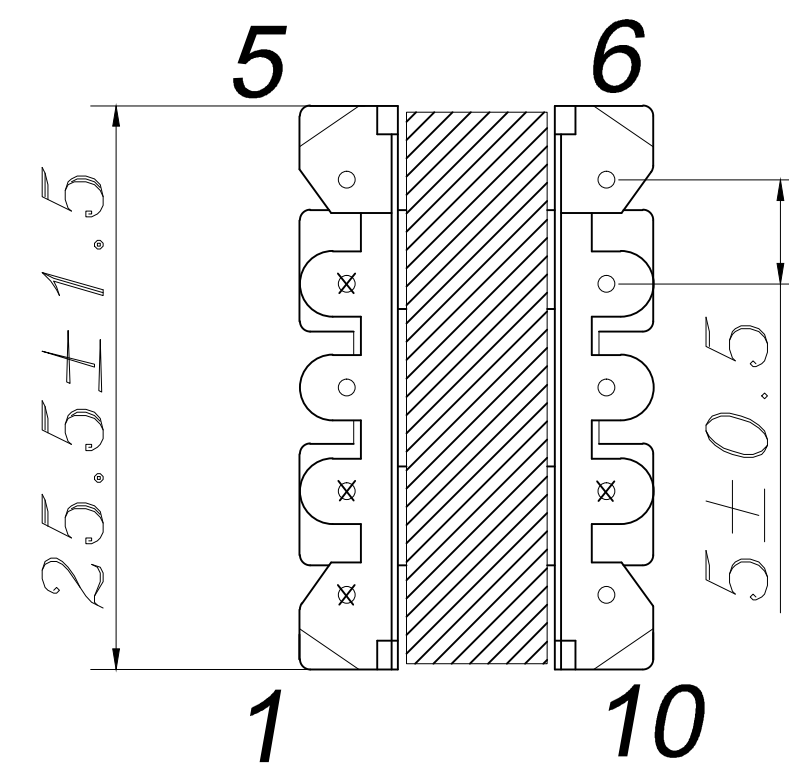
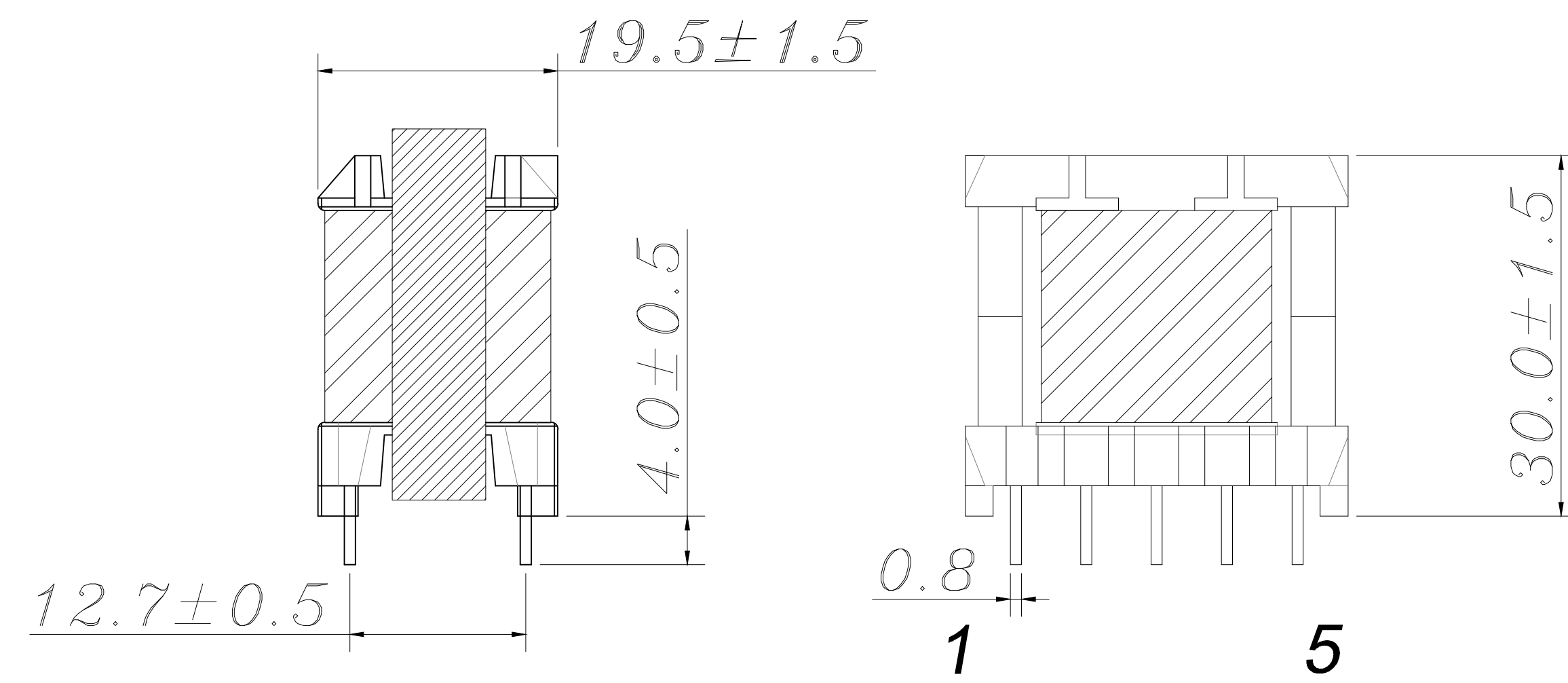


CUSTOMER TERMINAL	ROHS	Lead (Pb) -free
	YES	YES



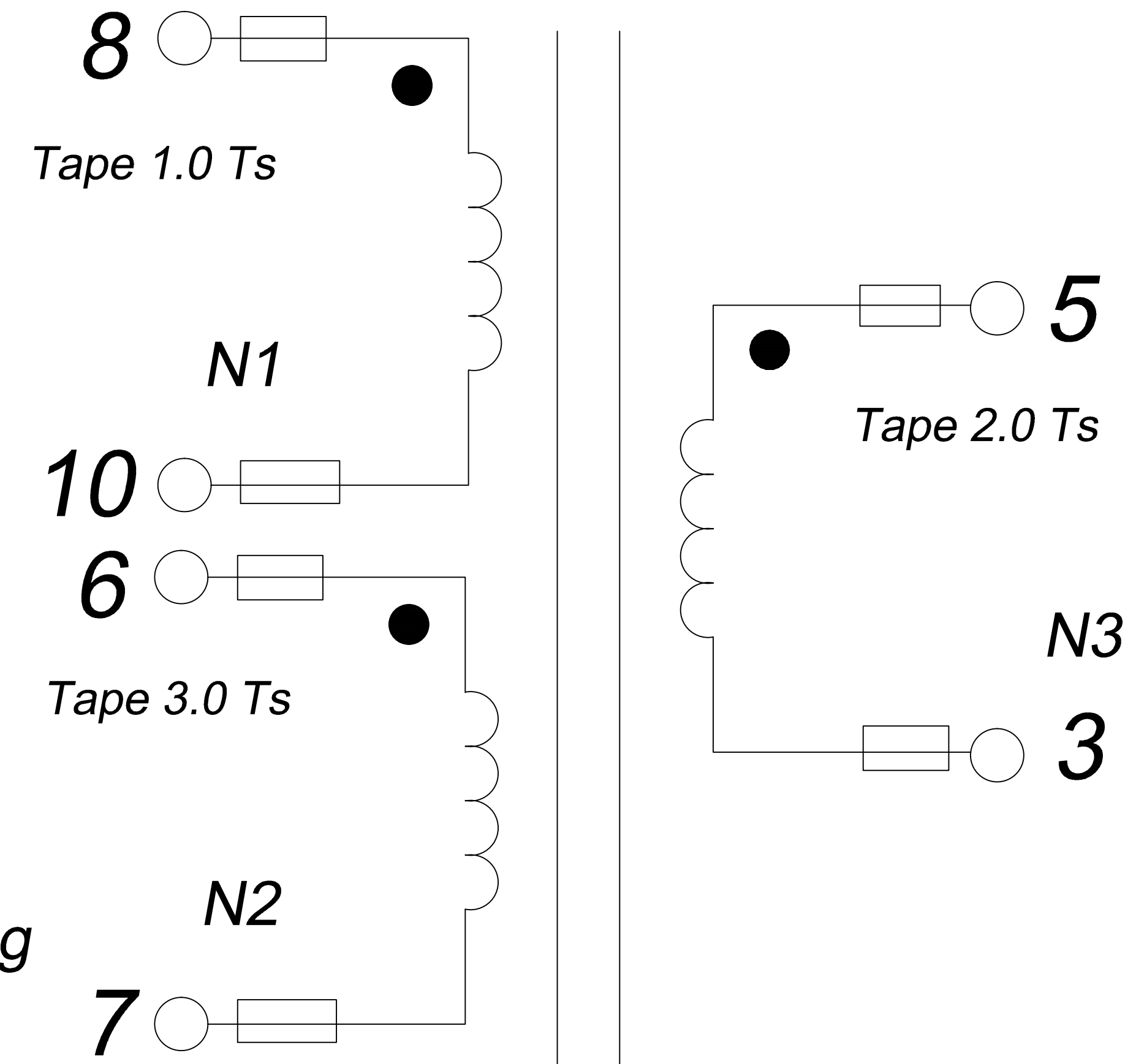
1. Mechanical Dimensions



Maeking: **FERRIWO YYWW
FWPTEF25V651K**

Note: PIN1,2,4,9 cut off
N1 use 2.0 Margin Tape in the end of the winding
N2,N3 use 2.0 Margin Tape in both sides of the winding

2. Schematic Diagram



3. Material List

Core:FW95-EE25/13/7
BOBBIN:FWB2501
Wire:2UEW 0.35/0.7mm 130°C
Tape: CT280-25u WF-2901
Tube: TFL tube 200°C
Operating Temperature: -30 to 115°C

4. Electrical Specification

Inductance: $L(8-10)=655\mu H \pm 10\%$ 1KHZ 1V
LK: $L(8-10)=69\mu H$ MAX 1KHZ 1V (PIN3,5,6,7 short)
DCR: $(8-10)=457m\Omega$ MAX
Hi-Pot: P-S AC 3.6KV 5mA 1S
P、S-CORE AC 1.0KV 5mA 1S

REV.	DATE	<p>Convention Placement</p>	DRW.	Drawing Title: TRANSFORMER	Part No:
0	00/00		CHK.		Customer P/N:
RoHS		www.ferriwo.com	APP.		Specification Sheet 1 of 1